



# Catalogue

22.03.2023











01

Interior as a  
Service

02

Conference as  
a Service

03

Room-in-Room

04

Lounge &  
Dining

05

Wellbeing

06

Homeoffice as  
a Service

07

Device as a  
Service

08

Interior Design

01

## Interior as a Service





Our services

## Interior for your office

Did you know?

The dream office increases employees' willingness to commute enormously. And at the same time ensures more creativity, productivity and the right feel-good factor.

Equip your offices with high-quality tables and chairs and choose the right accessories. Because acoustic walls, storage space and lighting can also make all the difference. At Podia you'll find interiors that can really do something: functional, stylish and ergonomic.





## Our planning **Individual and exclusive**

Do you have any wishes regarding materials, colors and product compositions? No problem. You have the free choice from our product portfolio - you have endless combination possibilities.

Find the furniture that really fits your corporate culture and office environment. Let our portfolio inspire you or tell us what you're looking for - either way, it's up to you.

So that your office equipment is not one of many. But rather the equipment that really suits you.





# Interior as a Service

## Office chair



YOYO

e f g

Modern and versatile office swivel chair

Upholstered seat

Lightweight and breathable polyester mesh backrest

Armrests and adjustable lumbar support

Möbelfakta Eco certificate



**8,50 € per month**

Inkl. 60 months support service



# Interior as a Service Table



## Izi Effect

e f e

manual height adjustable premium desk

in the range 61-90cm

the classic desk sturdy metal frame

available in many sizes and designs



**10,00 € per month**

Inkl. 60 months support service



# Interior as a Service Table



## Rise

e f e

Electr. height adjustable desk in the range 72-122 cm

Frame white, black

Tabletop: white, black, ash/birch/oak

160x80 cm

Incl. cable management

Scandinavian design



Möbelfakta Eco Certificate



Nordic Swan Ecolabel



**15,00 € per month**

Inkl. 60 months support service

# Interior as a Service

## Acoustic wall



Tab S

e f g

Sound absorbing desk partition

Attaches to the desk top 65 cm high

Fabric selection: Gabriel Tonal



**8,50 € per month**

Inkl. 60 months support service



# Interior as a Service

## Acoustic wall



Tab S

e f g

Sound absorbing partition wall

Self-standing

Available in different sizes, e.g. 160 x 160 cm

Fabric selection: Gabriel Tonal



**14,00 € per month**

Inkl. 60 months support service





# Interior as a Service Container



## Storage

e F e

Roll container with lock

Available in white, black or birch, ash, oak

52 cm hight

43 cm wide

62 cm deep



**8,00 € per month**

Inkl. 60 months support service



# Interior as a Service

## Cupboards



Hold

e f g

Apothecary cabinet

Available in white, black or birch, ash, oak

72 cm high

40 cm wide

120 cm deep



**13,50 € per month**

Inkl. 60 months support service

# Interior as a Service

## Cupboards



### Hold

e f g

Office cabinets with sliding doors

Available in white, black or birch, ash, oak

80 cm wide or 120 cm wide

40 cm deep

Cabinet 2OH, 2 shelves, height: 82 cm

Cabinet 3OH, 3 shelves, height: 120 cm



**10,00 € - 15,00 € per month**

Inkl. 60 months support service



# Interior as a Service

## Cupboards



### Storage

e f e

Office cabinets with doors and lock

Available in white, black or birch, ash, oak

80 cm wide and 40 cm deep

Cabinet 2OH, 2 shelves, height: 82 cm

Cabinet 3OH, 3 shelves, height: 120 cm

cabinet 4OH, 4 shelves, height: 157 cm

cabinet 5OH, '5 shelves, height: 195 cm

**7,00 € - 12,00 € per month**

Inkl. 60 months support service



# Interior as a Service

## Storage systems



### Grand Slam sedus

Modular locker and storage system

optionally with key, combination lock or RFID and mail slot

ideal for all shared desk environments

available in many different sizes and colors

freely configurable and expandable

Made in Germany



**Ab 15 € per month**

Inkl. 60 months support service



# Interior as a Service

## Storage systems



### Choice

narbutas

Modular locker system

optionally with key, combination lock or RFID

and letter slot

ideal for all shared desk environments

available in many different sizes and colors

freely configurable



**Ab 11 € per month**

Inkl. 60 months support service

02

## Conference as a Service





## Conference as a Service

# For better teamwork

This is how you offer your employees the perfect basis for effective meetings: with hybrid conference solutions for your office.

At Podia you'll find conference chairs that are still comfortable even after hours of meetings. Conference tables that offer enough space.

And modern video conferencing solutions that enable meetings in the best quality - no matter where your discussion partners are.



# Conference as a Service

## Meeting table



HideTech

e f g

Exclusive meeting table for up to 16 people  
with high quality table top and cable management  
Available in various sizes (up to 5.40 m) and finishes.

Here: 420 cm x 120 cm

Frame: Black

Table top: Linoleum Black

**98,00 € per month**

Inkl. 60 months support service





# Conference as a Service

## Meeting table



HideTech



Exclusive meeting table for up to 8 people  
with high quality table top and cable management system  
In different sizes up to 5,40 m  
available in different frame colors and table tops.

Here: 210 cm x 120 cm for 8 people



**42,00 € per month**

Inkl. 60 months support service

# Conference as a Service

## Meeting table



### HideAway

e f e

Flexible meeting table with tiltable table top and castors

with high quality linoleum table top black

160cm x 80 cm

Frame: black or white

Table top: anthracite, white, various wood veneers Wood veneers



**13,00 € per month**

Inkl. 60 months support service

# Conference as a Service

## Meeting table



### HideAway

e f e

Flexible meeting table with tiltable table top and castors

with high quality linoleum table top black

240 cm x 80 cm

Frame: black or white

Table top: anthracite, white, various wood veneers Wood veneers



**22,00 € per month**

Inkl. 60 months support service



# Conference as a Service

## Meeting table



Continue

e F G

Exclusive meeting table in minimalistic, Scandinavian design

Incl. cable management

Frame: white, black or silver

Table top: ash or linoleum black

Available in different sizes up to 5,40 m

Here: 210 cm x 120 cm



**25,00 € per month**

Inkl. 60 months support service

# Conference as a Service

## Meeting table round



Chat

e f g

round meeting table

Frame: white, black, silver

Table top: white, anthracite, oak, ash white pigmented

diameter: 90 cm or 120 cm

height: 72 cm



**10,00 € - 13,00 € per month**

Inkl. 60 months support service

# Conference as a Service

## Meeting chair



Nova

e f e

Classic, high quality meeting chair

Upholstered seat and back

Armrests

Stackable

Frame: black, white, silver

Fabric selection: Gabriel Select



**8,00 € per month**

Inkl. 60 months support service





# Conference as a Service

## Meeting chair



Savo 360

e f e

Premium meeting and project chair

Designed by Olle Lundberg

Sustainable production

Height adjustable seat height and backrest



reddot winner 2022



**Ab 14,50 € per month**

Inkl. 60 months support service

# Conference as a Service

## Meeting chair



### Favor



Exclusive meeting chair

Fully upholstered

With castors and armrests

Medium high back

Frame: black, white, silver

Fabric selection: Gabriel Select



**19,00 € per month**

Inkl. 60 months support service



# Conference as a Service

## Meeting room bundle



### Nano



Video conferencing system from Urbentech

Open for MS Teams, Zoom, etc.

Incl. 55" display, poly video/audio bar, control module

### mastermind high



High quality conference table for 4-8 persons

Modular expandable

### se:spot stool



Stylish and comfortable high chair (4 pieces)

German Design Award Winner 2021

**Set 390,00 € per months**

Inkl. 60 months support service





# Conference as a Service

## Meeting room bundle



### Single Frame



Video conferencing system from Urbentech

Compatible with MS Teams, Zoom, etc.

Incl. 55" display, poly video/audio bar table control module, cables, etc.

### mastermind



High quality conference table for 4-5 persons

Modular expandable

### allright



Elegant design conference chair (4 pieces)

Stackable

**Bundle starting at 285 € per month**

Inkl. 60 months support service



# Conference as a Service

## Meeting room bundle



### Single Frame



Video conferencing system from Urbentech

Compatible with MS Teams, Zoom, etc.

Incl. 55" display, poly video/audio bar table control module, cables, etc.

### Nova Wood



High quality conference table for 4-6 people

Solid wood legs made of ash

### TWIST&SIT



Lounge chair (4 pieces)

Minimalist and clean lines

**Bundle starting at 290,00 € per month**

Inkl. 60 months support service



# Conference as a Service

## Video conference system



### Nano Frame



Video conferencing system from Urbentech

For small, medium and large meeting rooms

Color: black, white

High quality frame incl. professional technology

LG 55" Ultra HD display Poly Studio X50 & TC8

video/audio bar and

Desktop control module

Compatible with MS Teams, Zoom, etc.



**200,00 € per month**

Incl. 36 months support service

Incl. Delivery and installation



# Conference as a Service

## Video conference system



### Nano Mobi



Video conferencing system from Urbentech

For small, medium and large meeting rooms

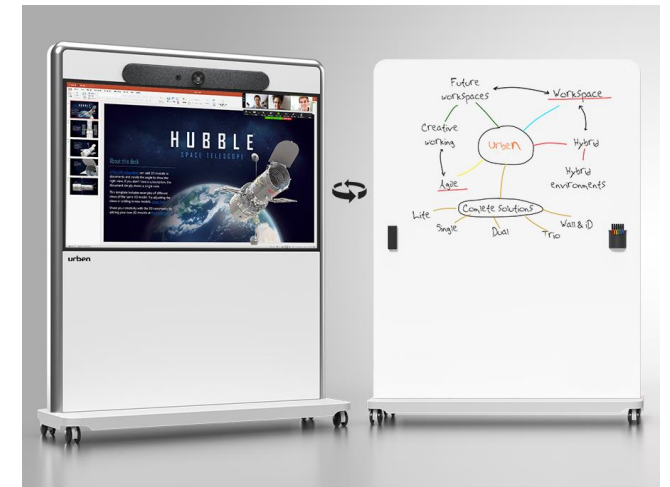
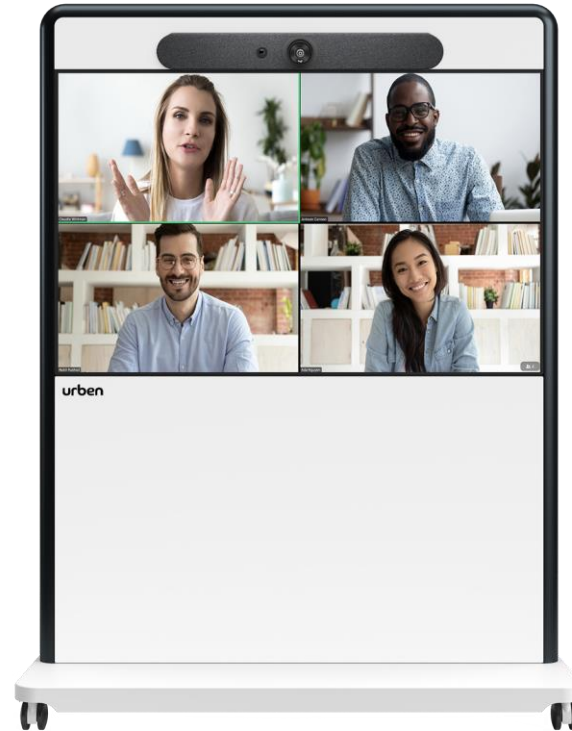
Color: black, white

High quality frame incl. professional technology

LG 55" Ultra HD display Poly Studio X50 & TC8 Video/Audio Bar and

On rolling stand with whiteboard backboard

Compatible with MS Teams, Zoom, etc.



**245,00 € per month**

Incl. 36 months support service

Incl. Delivery and installations

# Conference as a Service

## Video conference system



### Neat Board



Portable video conferencing system 65" 4k multi-touch

LED display + chipset

120° camera

Incl. table module 8" Neat Pad

Whiteboard function

100% compatible with MS Teams or Zoom Rollable stand

Wi-FiSensors for air quality



**275,00 € per month**

Incl. 36 months support service

Incl. Delivery

Conference as a service

# Google Meet Bundle



## Google Meet Series One Room Kits **Lenovo**

Ready to use conferencing solutions for Google Meet  
For medium-sized meeting rooms

Google's TrueVoice™ noise cancellation technology

4K-capable AI cameras

Wi-Fi

## 65" Sony Professional Display incl. wall mount

Professional 65" Bravia display

VA panel with anti-glare, HDR

4K/UHD resolution (3,840 x 2,160 pixels)

**180,00 € per month**

Incl. 36 months support service





03

## Room-in-Room as a Service





## Room-in-Room as a Service

# **Working with focus – in open spaces**

The office is often bustling - but you need quiet for an important conversation? We have just the thing for you:

telephone boxes as a room-in-room solution.  
Alone, in pairs or in a large team - we have the right box for every situation.

Equip your workrooms with telephone boxes for a quiet retreat and an atmosphere of concentration.



# Room-in-Room as a Service Pods



## Mingle

e f e

Lounge

Loose retreat Sofa system with high back and high sides

Can be flexibly combined

Homely, cozy atmosphere

Ideal for brainstorming



# Room-in-Room as a Service

## Lounge



### Mingle

e f e

Lounge armchair

76 cm wide and 141 cm high

1 person

Lounge 3 seater sofa

208 cm wide and 141 cm high

2-3 persons

Fabric cover



**40 € per month**

Incl. 60 months support service



# Room-in-Room as a Service Pods



## Surround Me

e f e

Office pod with or without roof

104cm wide

Option 1: sofa + table

Option 2: desk + chair

Power connection in table and lamp

Can be combined in any way

Scandinavian design



**60,00 € per month**

Incl. 60 months support service

# Room-in-Room as a Service Pods



## Surround Us

e f e

Office pod meeting setup

184 cm wide and 173 cm high

Incl. 3-seater sofa and power outlets

Ideal for meetings, phone calls Scandinavian design



**90,00 € per month**

Incl. 60 months support service

# Room-in-Room as a Service

## Office Cubes



### Cube

sedus

Office Box Series

Minimal sound propagation  
due to enclosed cabin

Fully furnished Incl. power supply,  
ventilation and lighting

Made in Germany



Cube S

**220,00 € per month**

Incl. 60 months support service



Cube M

**310,00 € per month**

Incl. 60 months support service



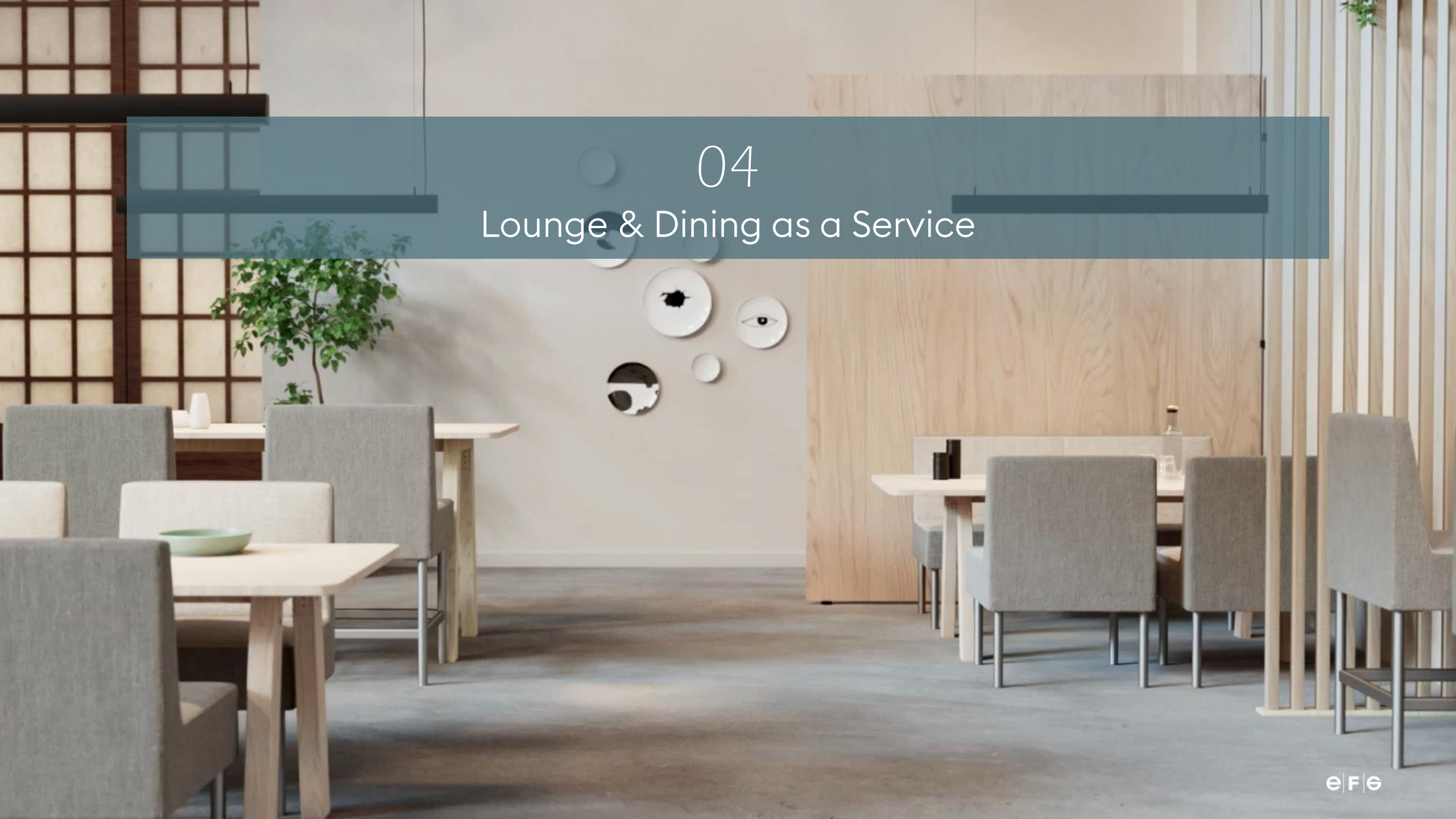
Cube L

**420,00 € per month**

Incl. 60 months support service

04

## Lounge & Dining as a Service





## Lounge & Dining as a Service

# Better together

You're not in the office just to work. Especially not anymore, in this day and age. More and more, the office is becoming a gathering place - a place for communication and collaboration.

Equip your office space with ample lounge & dining options. This will provide your employees with places for informal brainstorming, a quick gossip, or a relaxing place to have lunch.

It's no secret that interaction among colleagues is important. With comfortable seating areas and efficient dining areas, you can promote togetherness in your company. Your employees will be happy - we promise!



# Lounge & Dining as a Service

## Lounge



### Mingle

e f g

Design Lounge Series

Freely combinable sofa and lounge worlds

Fabric selection: Gabriel Select



**from 15,00 € per element**

Incl. 60 months support service

# Lounge & Dining as a Service

## Lounge Sofa



### Mingle

e f e

Design Lounge Series

flexible combinations

extensive fabric selection

according to customer

requirements



Armchair

**28,00 € per month**

Incl. 60 months support service



2 seater Sofa

**33,00 € per month**

Incl. 60 months support service



3 seater Sofa

**40,00 € per month**

Incl. 60 months support service

# Lounge & Dining as a Service

## Lounge table



### Chat

e f g

Oval or round meeting table

Frame: white, black, silver

Table top: white, anthracite, oak, ash white pigmented

Diameter: 72 cm or 90 cm

Height: 52 cm



**10,00 € per month**

Incl. 60 months support service



# Lounge & Dining as a Service

## High table



### Mastermind High Table sedus

High table for 8 people

240 cm x 90 cm

Table legs black, white

Table top: White, Black, Birch, Oak



**53,00 € per month**

Incl. 60 months support service

# Lounge & Dining as a Service

## High table



### se:lab High Table

sedus

Narrow high table

200 cm x 70 cm

Table legs black, white

Table top white, black, birch, oak



**27,00 € per month**

Incl. 60 months support service

# Lounge & Dining as a Service

## High chair



se:spot stool

sedus

High chair with comfortable plastic seat

Frame: metal silver, white, black seat: black, white

Seat height: 78,5cm



**5,50 € per month**

Incl. 60 months support service

# Lounge & Dining as a Service Table



## Collaborate

e f e

Meeting & Dining Table Series

Long table

540 cm x 120 cm

Table legs black, white

Table top white, black, birch, oak



**110,00 € per month**

Incl. 60 months support service



# Lounge & Dining as a Service

## Chair



Nova

e f e

Classic, high quality meeting chair

Wooden surface, wipeable

Stackable

Frame: White

Seat and back ash white pigmented



**5,00 € per month**

Incl. 60 months support service

A modern interior scene featuring a semi-circular sofa with a brown base and a tan backrest, positioned on a circular rug. Behind it are three light-colored chairs. To the left is a potted plant with large green leaves. On the wall are three framed sculptures of faces and a large textured artwork. A semi-transparent blue banner with the text '05 Wellbeing' is overlaid on the upper part of the image.

# 05 Wellbeing





## Wellbeing as a Service

# Feeling good in the office

Whether at home or in the office - plants have measurably positive effects on the physical and mental well-being of people. This has even been proven by studies. Even better: this can increase the performance of your employees by up to 15%\*.

Treat yourself and your offices to plants, moss walls or green room dividers. You'll create a relaxed atmosphere and reduce noise at the same time.

Best of all, plants naturally regulate the indoor climate in your offices.

06

## Homeoffice as a Service





Homeoffice as a Service

## Working from home

Hybrid working also means one thing: home office.

Even after the pandemic, employees want the option of working from home. The saved commute leaves more free time and more time for family and friends.

Concentrated work without office noise? That works perfectly in a home office. But only with the right equipment - because kitchen table and dining chair are so 2020.

Equip your employees with Podia home office bundles. Because high-quality office interior provides the basis for efficient, creative and productive work.



Homeoffice as a Service

## Homeoffice-Bundle “S”



### se:desk home

sedus

Home office desk

Lightweight design, clean lines

Compact dimensions (120 x 80 cm) and a shelf for utensils

Fixed height 74cm, also available as electr. height adjustable version

### se:motion

sedus

Dynamic swivel chair for agile work

Upholstered seat

Plastic backrest with semi-transparent perforated structure

Height adjustable armrests

**22,00 € per month**

Incl. 60 months support service



e|F|E



Homeoffice

# Homeoffice-Bundle “L”



## Rise

e f g

Electr. height adjustable premium desk

Scandinavian design

Möbelfakta Eco Certificate



Nordic Swan Ecolabel



Conforms to DIN EN 527 up to 129 cm height

## Yoyo

e f g

High quality office swivel chair with mesh back purist

and minimalist design

Möbelfakta Eco certificate



**24,50 € per month**

Incl. 60 months support service

Homeoffice

# Homeoffice-Bundle “L”



## Rise

e f g

Electr. height adjustable premium desk

Scandinavian design

Möbelfakta Eco Certificate 

Nordic Swan Ecolabel 

Conforms to DIN EN 527 up to 129 cm height

## Savo 360

e f g

Premium meeting and project chair

Designed by Olle Lundberg

Sustainable production

Height adjustable seat height and backrest

**29,50 € per month**

Incl. 60 months support service





Homeoffice

# Homeoffice-Bundle “Do It Yourself”



## Team Pro

e f g

manual height adjustable premium desk

Scandinavian design

freely adjustable in the range 67-82 cm

## Yoyo

e f g

High quality office swivel chair with mesh back purist

and minimalist design

Möbelfakta Eco certificate



**15,00 € per month**

Incl. 60 months support service

# 07 Device as a Service



Device as a Service

## Powerful and effective

At Podia you can secure powerful laptops, modern smartphones and effective accessories at monthly rates. For example, you can find smartphones from Apple, laptops from Lenovo and high-resolution screens from hp in our portfolio.





# Device as a Service

## Laptop



### Apple 13,3" MacBook Air



Modell: MGN93D/A

M1 Chip 8-Core

8GB RAM

256 GB SSD

Silver and grey



**27,00 € per month**

Incl. 36 months support service

# Device as a Service **Laptop**



## Lenovo ThinkPad E14



Modell: 20Y700AHGE

14" screen

AMD Ryzen™ 7 5700U-Prozessor

16 GB RAM

500 GB SSD

Windows 10 Pro



**29,00 € per month**

Incl. 36 months support service

## iPhone & iPad selection

### Apple iPhone 12mini 64GB

MGJ53ZD/A

13.7 cm (5.4") Super Retina XDR Display



**16,00 € per month**

Incl. 36 months support service

### Apple iPad 9. Gen 64 GB

MK2K3FD/A

25,9 cm (10,2 Zoll) Retina Display with 2160 x 1620 Pixels

64 GB, 8,0 MP Cam, Wi-Fi, BT 4.2, Lightning Connector



**10,00 € per month**

Incl. 36 months support service



# Device as a Service Monitor



## Dell Professional P2722HE Monitor



Model: P2720DC

Integrated full docking station via only one USB-C cable

Height adjustable

HD resolution (1920 x 1080)



**14,50 € per month**

Incl. 36 months support service

# Device as a Service

## Monitor



### HP 34" UltraWide Screen

incl. complete docking station via only one USB-C cable

Height adjustable

Ultra Wide HD resolution (3440 x 1440)

USB-C dock + charging function with 65 watts



**16,00 € per month**

Incl. 36 months support service

Device as a Service

# Webcam & Headset Bundle



## Poly Voyager Focus USB-C

Premium Bluetooth Headset Active Noise Cancelling Includes charging cradle, travel case, charging cable

Pairing with multiple Bluetooth-enabled devices

Rechargeable battery provides up to 12 hours of talk time

Range up to 30 meters



## Logitech C920s PRO HD

HD Webcam 1080p with cover flap

Compatible with all major platforms



**9,50 € per month**

Incl. 36 months support service



# 08 Interior Design





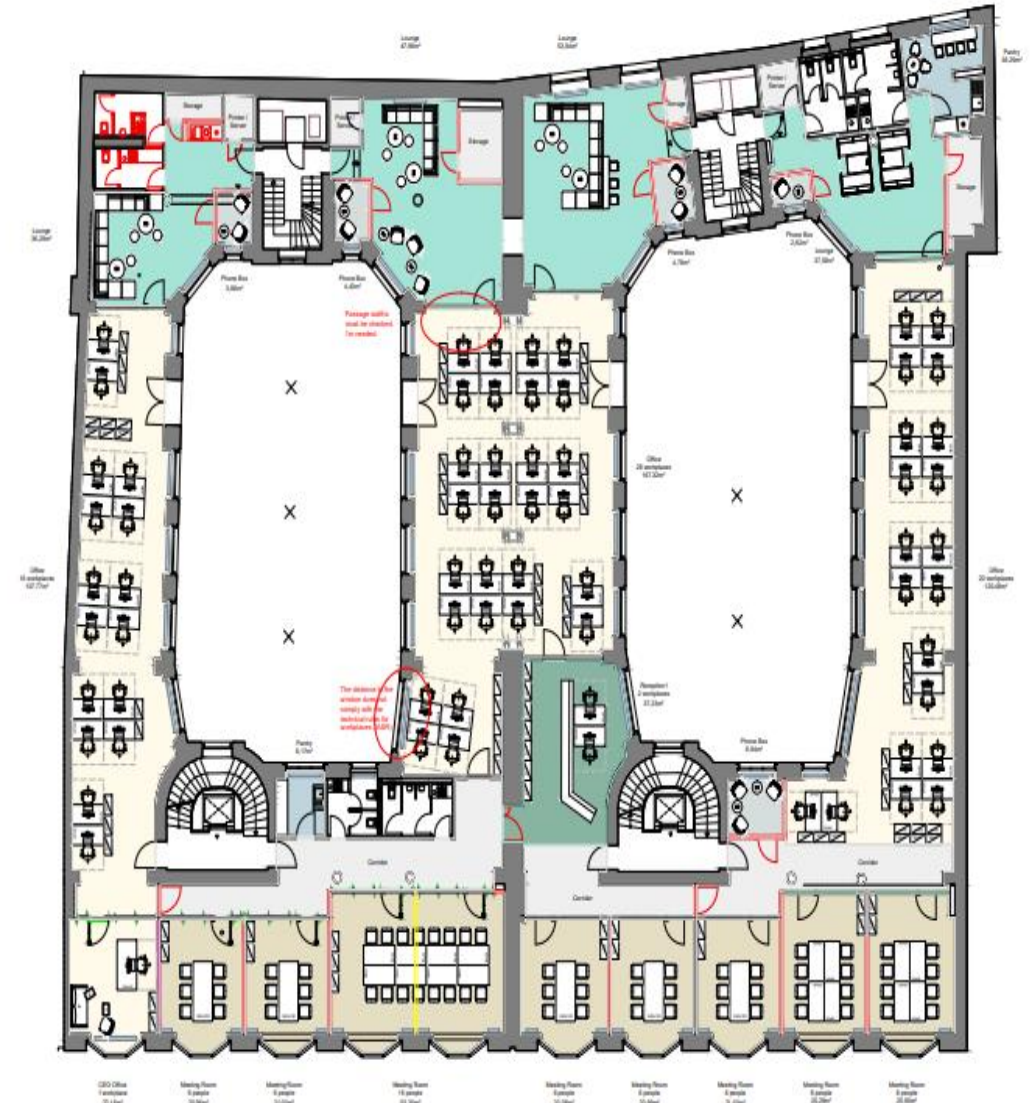
Interior Design

# 100 % tailored to you

You like what you've seen - but need help with implementation and planning?

No problem. Our Podia interior design team, the experts for Hybrid Work, will be happy to support you - depending on your needs - with occupancy plans, design concepts or joint workshops with you and your employee.

Just get in touch with us. Together we will find the solution that suits you and your company.



Floor plan 1st floor - Scale 1:150

# YOUR NEW HYBRID OFFICE

For more information, contact us:

[konstantin.konstantinidis@podia.de](mailto:konstantin.konstantinidis@podia.de)

+49 172 - 966 80 80

Are you ready for your new Podia office?

[www.podia.de](http://www.podia.de)

